

## Memorandum

March 6, 2018

To: Alan Henning, R10EPA

From: Peter Leinenbach, R10EPA

**Subject:** River distance associated with 303d segments with temperature/sedimentation/turbidity listings within the Rogue/Siskiyou, Eastern Cascades, and Blue Mountain assessment areas in Oregon

---

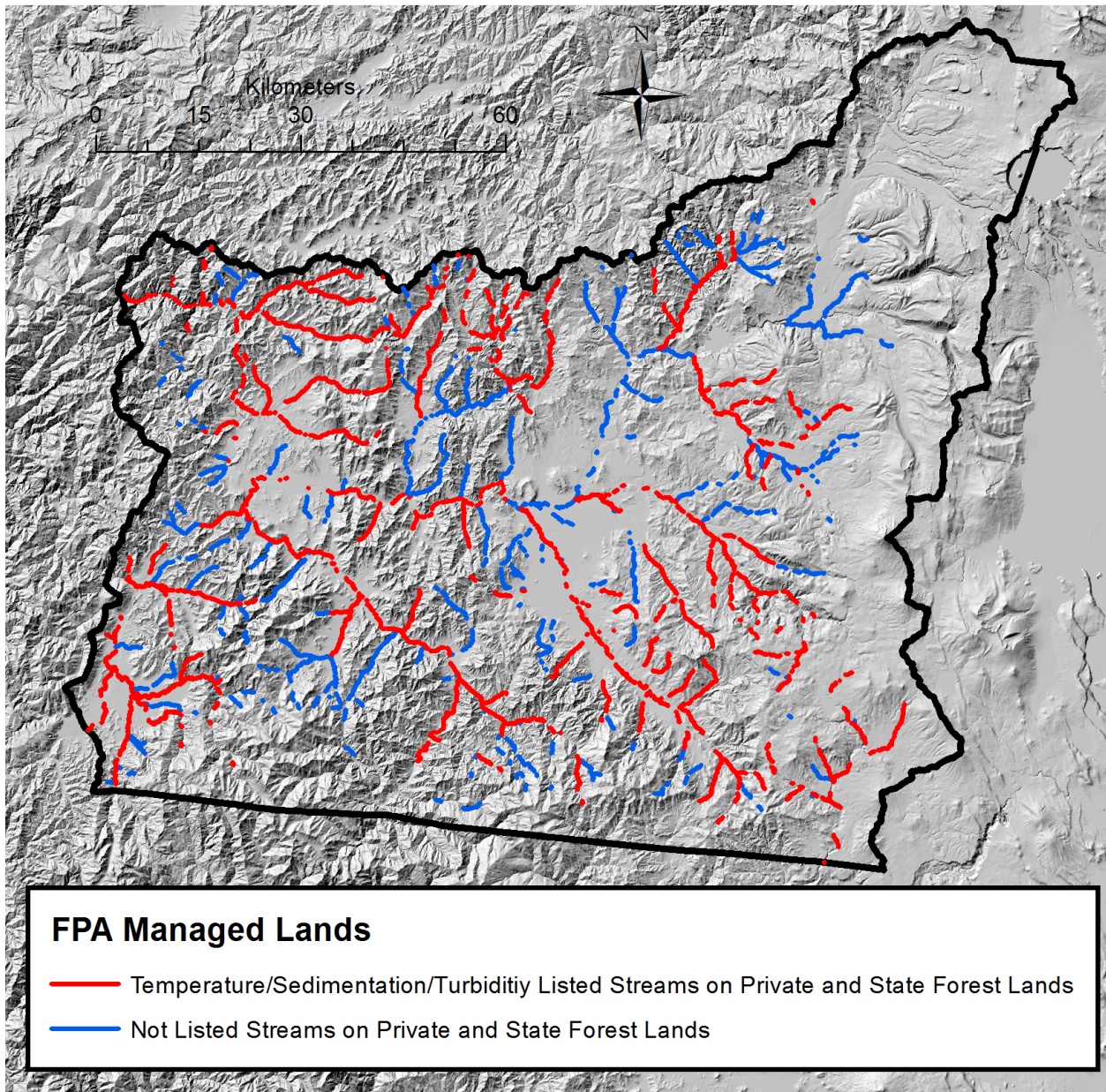
### Results -

Approximately, 80% of streams within the Rogue/Siskiyou assessment area that travel over privately managed forested lands are listed for temperature/sedimentation/turbidity (**Figure 1**). Similarly, approximately 68% of streams within the Eastern Cascades assessment area that travel over privately managed forest lands are listed for temperature/sedimentation/turbidity (**Figure 2**). Finally, approximately 64% of streams within the Blue Mountain assessment area that travel over privately managed forest lands are listed for temperature/sedimentation/turbidity (**Figure 3**).

### Datasets/Methods -

Downloaded the 2012 Integrated report from the ODEQ website. Used the "DEQ\_Streams" layer to define total stream distance, and used the "OR\_Streams\_WaterQuality\_2012" layer was used to determine the streams that were listed for temperature, sedimentation or turbidity (e.g., Listed within the column labeled "Parameter" in the attribute table). These stream layers were clipped to the private management areas within each assessment area based on the landownership layer downloaded from the ODF website (i.e., Ownership\_Land\_Management). These clipped streams were then subsequently clipped again by the forested areas data layer obtained from the USFS Landfire website (<https://www.landfire.gov/>). Specifically, forest landcover areas were defined at "Upland Forest", "Upland Wood", and "Riparian Forest" attributes in the ESPLF\_NAME column within the Environmental Site Potential (ESP) dataset.

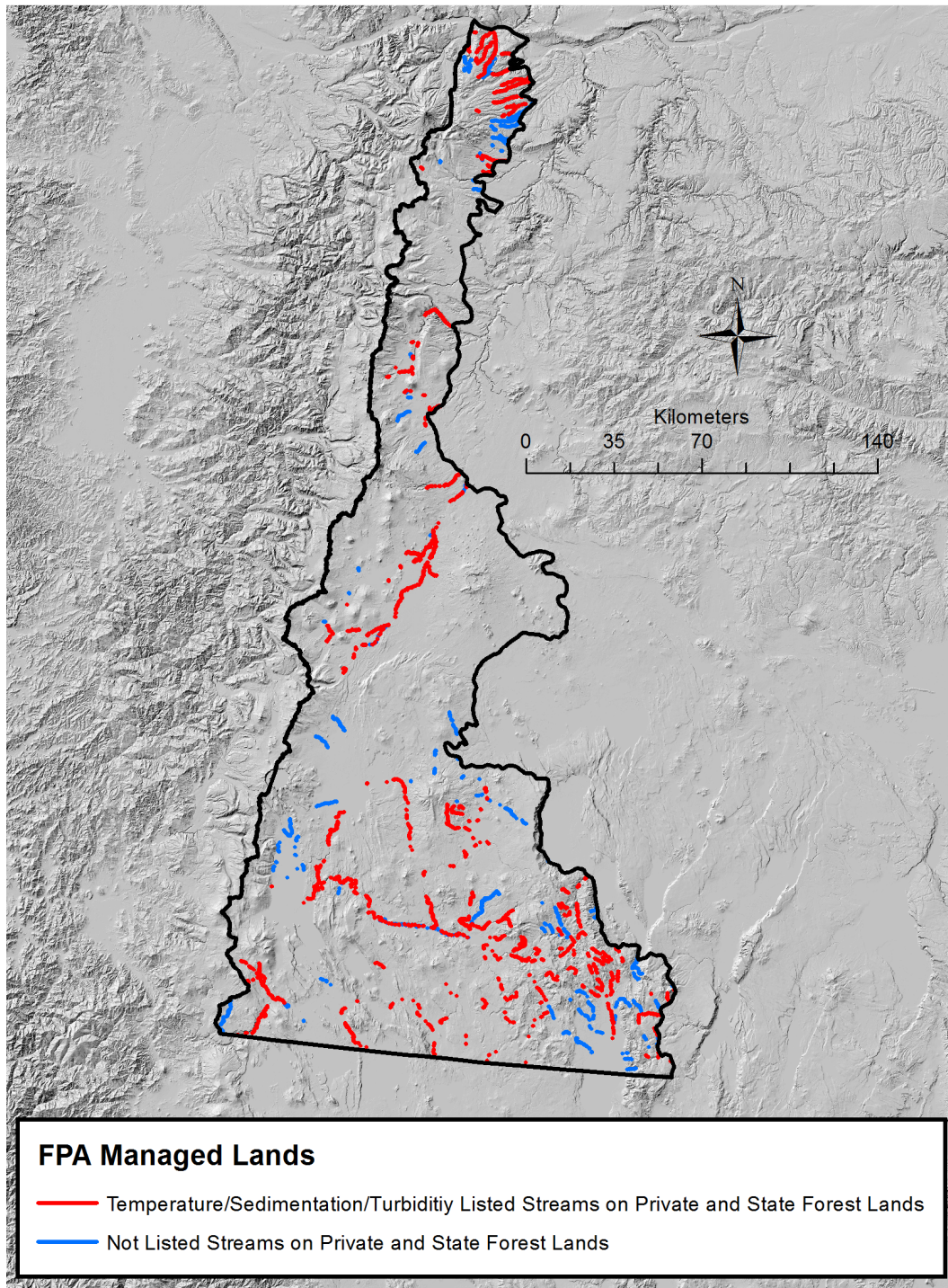
**Figure 1. Rogue/Siskiyou**



Category	River Kilometers	Relative %
Total river kilometers along privately managed forested lands	774.4	
River kilometers of listed Temperature/Sedimentation/Turbidity streams along privately managed forest lands	637.1	80%



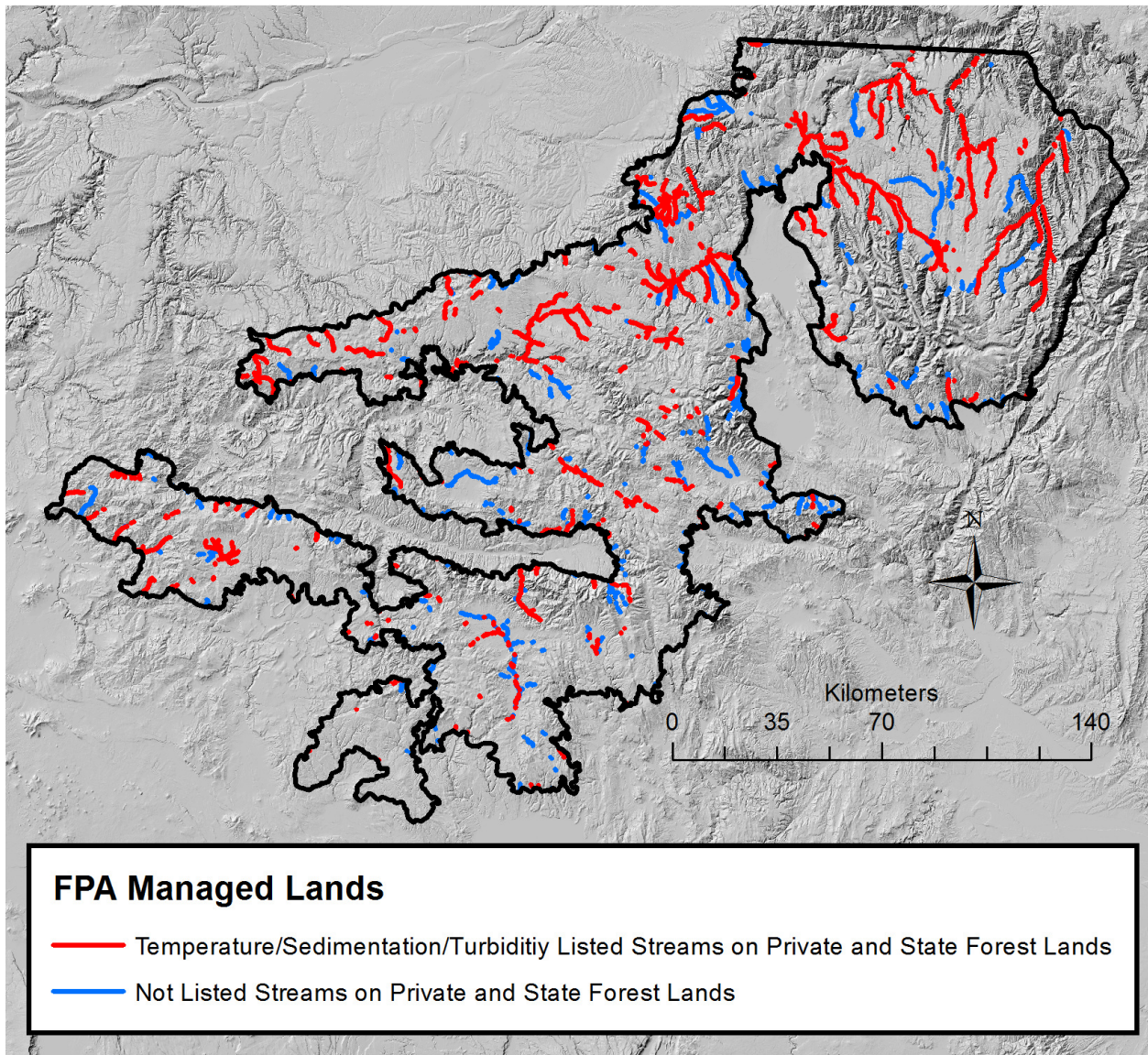
**Figure 2. Eastern Cascades**



Category	River Kilometers	Relative %
Total river kilometers along privately managed forested lands	650.0	
River kilometers of listed Temperature/Sedimentation/Turbidity streams along privately managed forest lands	441.9	68%



**Figure 3. Blue Mountains**



Category	River Kilometers	Relative %
Total river kilometers along privately managed forest lands	1685.4	
River kilometers of listed Temperature/Sedimentation/Turbidity streams along privately managed forest lands	1083.6	64%